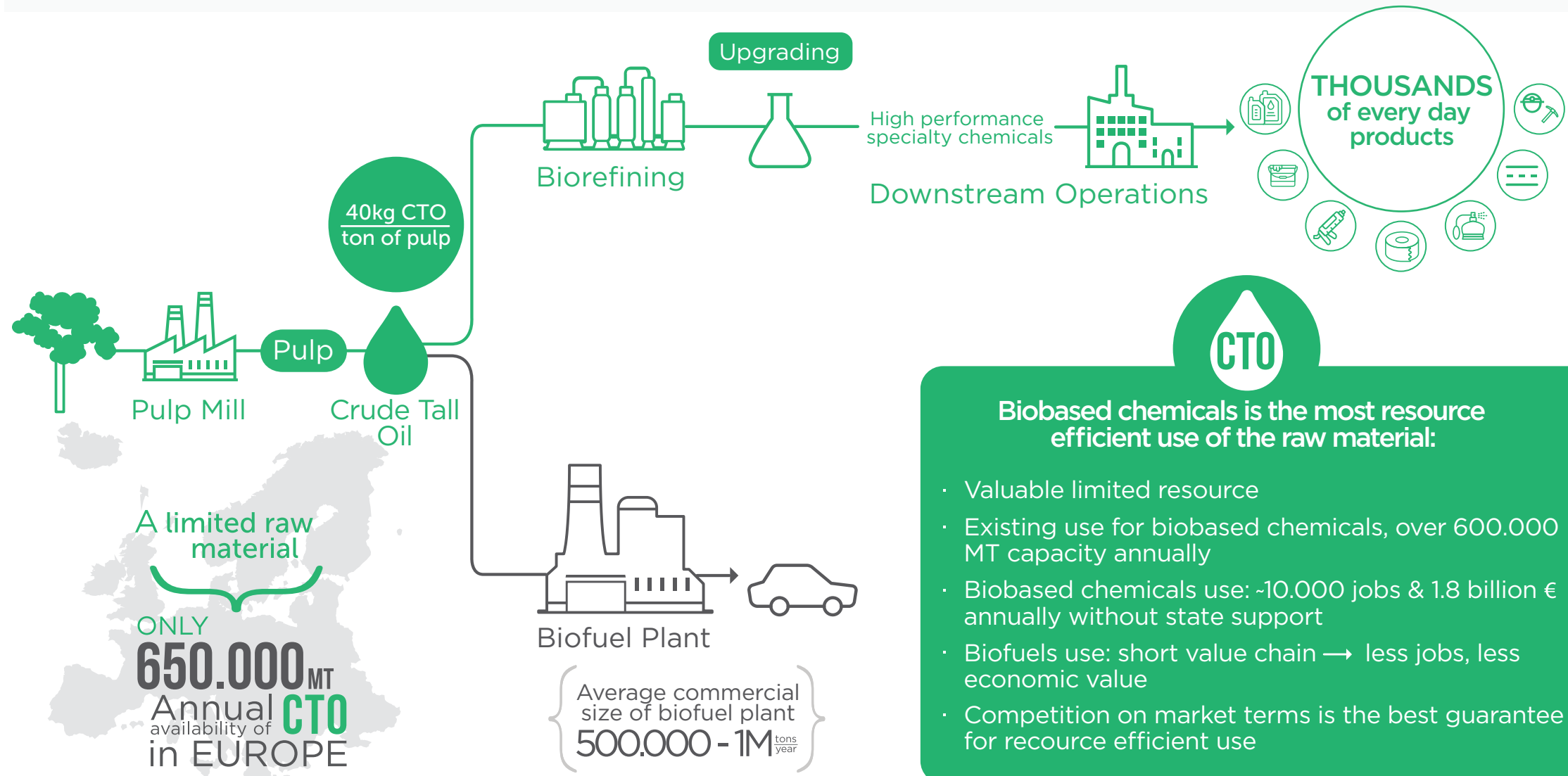
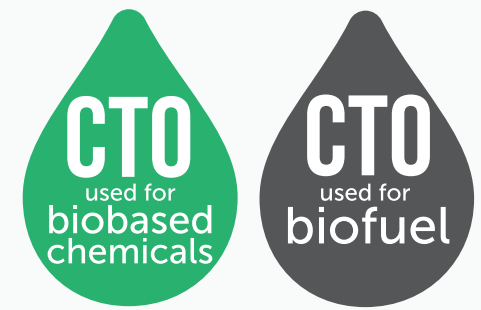


# CRUDE TALL OIL IN EU

BIOBASED CHEMICALS USE LEADS TO LONGER VALUE CHAIN AND INCREASED RESOURCE EFFICIENCY



**CTO**

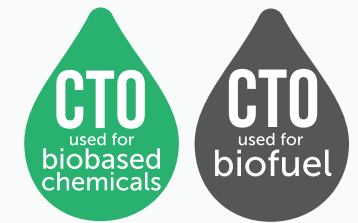
**Biobased chemicals is the most resource efficient use of the raw material:**

- Valuable limited resource
- Existing use for biobased chemicals, over 600.000 MT capacity annually
- Biobased chemicals use: ~10.000 jobs & 1.8 billion € annually without state support
- Biofuels use: short value chain → less jobs, less economic value
- Competition on market terms is the best guarantee for resource efficient use

Crude Tall Oil (CTO) is a by-product of the Kraft pulping process, that is refined into a wide array of products

# CRUDE TALL OIL IN EU

BIOBASED CHEMICALS USE GENERATES MORE ECONOMIC VALUE, JOBS AND CO<sub>2</sub> SAVINGS THAN BIOFUELS USE



## ECONOMIC IMPACT



**4X** more economic value



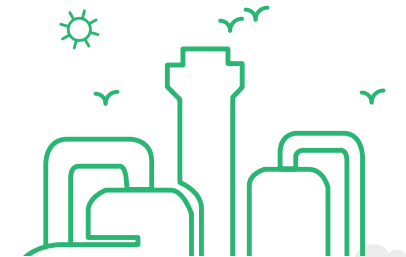
## TOTAL JOB IMPACT



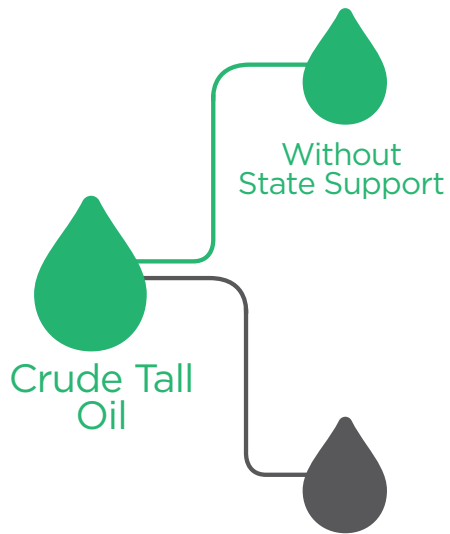
**20x** more jobs



## ENVIRONMENTAL IMPACT



**25%** savings in CO<sub>2</sub> EMISSIONS



## EU TRANSPORT IMPACT

Converting **ALL** European CTO to biofuels gives **0,2%** of total EU transportation fuels\*



0,2%

